

Youth Programming, Non-credit Professional Development, and Personal Enrichment Courses



FALL 2024



**HOLYOKE
COMMUNITY
COLLEGE**

Work and learn remotely — HCC can help!
Medical Interpretation, Line Cook, Nursing Assistant,
Pharmacy Technician, VESi, MindEdge and more inside!



hcc.coursestorm.com

Table of Contents

Course Registration Information	2	Online Professional Development for K-12 Educators ..	8
Parking Map	3	Languages	10
Certificate and Training Programs	4	Legal/Estate Planning	10
Arts	5	Education	10-15
Computers and Technology.....	5	BLACKROCKET	17
Expression.....	6	Certificates/Degrees	18
Food.....	7	Upright Technology Bootcamps	20-21
Home and Garden	9	Enrollment Form.....	25

Main Campus	Additional Locations			
Kittredge Center for Business and Workforce Development 303 Homestead Avenue Holyoke, MA 01040 413.552.2500 hcc.edu	E2E: Quaboag Region Workforce and Training Center 79 Main St. Ware, MA 01082 Kermit Dunkelberg, kdunkelberg@hcc.edu, 413.552.2506	HCC MGM Culinary Arts Institute 164 Race Street Holyoke, MA 01040 413.552.2838 hcc.edu/culinary	Ludlow Area Adult Learning Center (LAALC) Pasha Black 413-552-2999 (Ludlow) 413-755-3765 (Springfield) hcc.edu/esol hcc.edu/job-ready	Picknelly Adult and Family Education Center (PAFEC) 206 Maple St., Holyoke, MA 01040 413.552.2990

Course Registration Information

Community Education courses fill fast. We suggest you register at least two weeks before class start date, or by registration deadline if noted. If space is still available in a class, HCC can accept registration for most classes up to the business day before a class starts.

A \$20 fee will be charged for returned checks. All returned checks not made good will be referred to a collection agent.

CLASS SCHEDULES

Class dates are subject to change. Please check the website (www.hcc.edu/bce) for the latest updates, and be sure to check with the instructor on the first day of class. Classes are not held on state and national holidays, and individual instructors may make other adjustments.

FEES

Fees for materials are now included in the tuition price unless specifically noted.

REFUND POLICY FOR NON-CREDIT COURSES

Courses (with six or more meetings)

1. By the Friday before the first class meeting, 100% of all tuition, less \$30.
2. After the Friday before the first class meeting but before the third class meeting 50% of the course cost.
3. No refund will be granted after the start of the third class meeting.
4. Courses (with five or fewer meetings)
5. Refunds are available only if the student withdraws by the Friday before the first class meeting, less 25% of course cost, but not to exceed \$25.
6. Youth Programs: By the Friday before the first class meeting, 100% of tuition. No refunds will be granted after the start of the program.

COURSE CANCELLATION

Low enrollments can necessitate course cancellations.

HCC will attempt to notify students whose class has been cancelled and help them choose another course or obtain a refund. [Completing your course registrations as early as possible helps the college avoid cancelling classes.](#)

If the college cancels a course, 100 percent of all course costs are refunded.

BENEFITS, TUITION WAIVERS, AND THIRD PARTY BILLING

State Employee Tuition Waivers

Present waivers at the time of registration. Waivers are not accepted by telephone, Fax, mail, or online.

For non-credit courses, full-time state employees, their spouses and dependent children up to age 25 are eligible for tuition remission of 50 percent of tuition only for any non-credit course(s) or program(s).

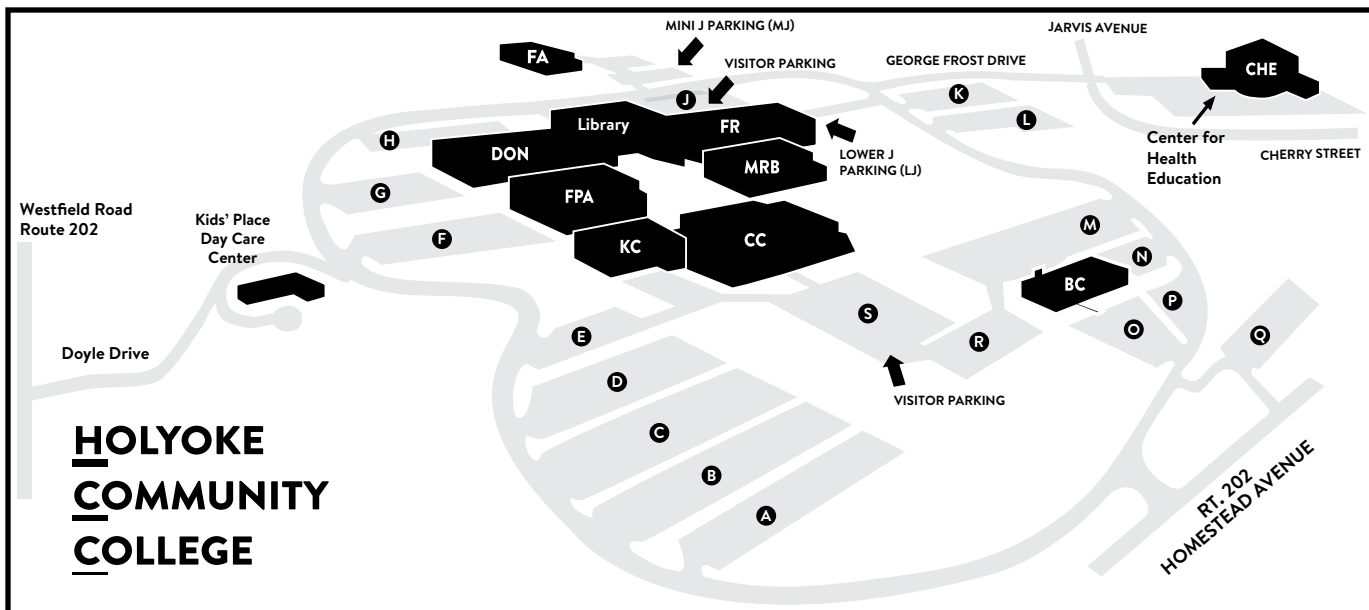
Tuition waivers will be honored so long as the minimum number of full-tuition-paying students per class has been met. Some exclusions apply.

Third Party Billing (Company-Agency Payments)




Please submit, by mail or in person, an enrollment form for each student along with an original purchase order or letter on company-agency letterhead including the student name(s) and the amount to be paid.

**HOLYOKE
COMMUNITY
COLLEGE**

**To sign up for classes:
hcc.edu/bce**



Map Key

 | **Parking Lot** |
  | **Road** |
  | **Building**

Building Key

BC	David M. Bartley Center for Athletics and Recreation
CC	Campus Center ACT Center, Admissions, Assessment Center, Book Store, Student Activities
CHE	Center for Health Education
DON	Donahue POD Cafe, Library, OSDDS, CAPS, ESL, TRIO, Veteran Services
FPA	Fine and Performing Arts Leslie Phillips Theater, Forum Cafe
FR	Frost Administration, Financial Aid, New Directions, Student Accounts, Student Records, Public Safety, ALANA
KC	Kittredge Center for Business and Workforce Development Thrive
MRB	Marieb Health and Life Sciences
FA	Public Safety Facilities

PARKING LOTS

STUDENTS (Permit required)
 Day Parking: 6 a.m. - 4 p.m. A, B, C, D, M, N, O, P, Q, R, S
 Evening Parking: 4 p.m. - 11 p.m. A, B, C, D, E, F, H, K, L, M, N, O, P, R
Students may not park in Upper J, Mini J, or H lot at any time.

STAFF (Permit required)
 Day Parking: E, F, H, K, L • Evening Parking: G, J, L

VISITORS
 E, J, S • for Special Events: F • Handicapped: G (Permit required)

PARKING

All credit and non-credit students are required to register their vehicles with the Campus Police Department. You must provide a valid vehicle registration. There is no additional charge for a parking sticker. It is included with the purchase of credit and/or non-credit course(s).

Additional Locations

<p>Holyoke: Center for Health Education 404 Jarvis Ave., Holyoke, MA 413.552.2467</p> <p>HCC MGM Culinary Arts Institute Cubit Building, 164 Race Street, Holyoke, MA 01040</p>	<p>HCC Adult Learning Center Picknelly Adult and Family Education Center (PAFEC) 206 Maple St., Holyoke, MA 01040 413.552.2990 ext. 3 <i>Free HiSet instruction, academic advising and basic computer skills, during the evening throughout the year.</i></p>	<p>Ludlow: Ludlow Area Adult Learning Center (LAALC) 54 Winsor St., Ludlow, MA 01056 413.583.0320 ludlowcenter.org <i>Free English for Speakers of Other Languages (ESOL) instruction, academic advising, and basic computer skills during the day and evening throughout the year.</i></p>	<p>Ware: Education to Employment (E2E) Center 79 Main Street, Ware, MA 01082 413.277.0294 <i>Workforce training programs, personal enrichment classes, civic events, and student support activities.</i></p>
---	--	--	--



Classes may be delivered as live in-person or live remote sessions, or blended.



WANTED: engaging faculty for courses

If you're interested in teaching and adding to the quality of our students' lives, send your resume with your course proposal to:

Contact: Community Services at communityservices@hcc.edu

Conference Services & Facilities Rentals

THE KITTREDGE CENTER
FOR BUSINESS AND
WORKFORCE DEVELOPMENT
HOLYOKE COMMUNITY COLLEGE



The state-of-the-art Kittredge Center is the Pioneer Valley's premier facility for conferences and professional meeting space. It offers the latest in technology and is accessible to all major highways. **Bring your conference to the Kittredge Center or ask about conference management services.**

Contact us at **413.552.2320**
or visit us online at
hcc.edu/about/space-reservations



CERTIFICATE & TRAINING PROGRAMS

@ HOLYOKE COMMUNITY COLLEGE

MANAGEMENT

- American Management Association University Certificate
- Project Management Certificate
- Nonprofit Management Certificate

LEADERSHIP SERIES

JOB ORIENTED

- Call Center (Advanced) and Customer Service Training
- Manufacturing Production Technician Training

CAREER FOCUSED

- Educators (Pre-School, K-12, PDP Certification Courses)
- Event Planning Certificate
- Interior Design Certificate Program
- Real Estate Principles and Practices

HEALTHCARE

- CNA (Certified Nursing Assistant) Program *
- EMT-B (Emergency Medical Technician Basic Course)
- Pharmacy Technician *
- ICD 9 and 10 Training

HOSPITALITY

- Hospitality and Culinary Program *
- ServSafe Certificate Program — TIPS Training

COMPUTERS

- CompTIA A+, Network+, and Security+
- Cisco CCNA Training Programs: Modules I, II, III, and IV (Scholarships Available)
- Microsoft Office Certifications

SAFETY

- Hoisting License Renewal Training
- OSHA-10 Certification
- OSHA-30 Certification



*For more information, please call **413.552.2500** or visit us online at hcc.edu/bce.*



**= Funding available for unemployed and low-income workers through the Department of Labor and Workforce Development and the Department of Transitional Assistance*

Computers and Technology, Arts

Holyoke Community College offers a wide range of workforce development options. From credit degree and certificate programs to professional certifications and resume-building courses for current and new employees.

hcc.edu/courses-and-programs/workforce-development

Educational, inspirational, and fun courses to enhance skills, build hobbies or generally improve your personal life.



Arts	5	Home and Garden	9
Computers and Technology	5	Languages	10
Expression	6	Legal/Estate Planning/Education ...	10
Food	7		

Computers and Technology

Getting Paid to Talk: An Introduction to Voice Over CRER 003 (1 session)

CRN 36323SEC 51Oct 16W6:30 p.m.-8:00 p.m.

From audio books to advertisements and beyond, we encounter recorded voices everywhere! In this one-night, live online class, your instructor will take you behind-the-scenes in the voice over field for a fun and realistic look at how the voice over field really works. You'll gain inside perspective on developing skills, and how to leverage your voice's strengths and interests, and more. Because this class is live, you'll have the opportunity to ask questions! Additionally, there will be a chance for a one on one script read with the instructor at the end of the class. About The Instructor: With more than 30 years as a voice over artist and voice over producer, your instructor is part of the team at Voice Coaches with clients including major television networks, gaming designers, audio book publishers and more. The class will be presented via Zoom.

Fee: \$45.00

Medical Interpreter CERT 017 (60 sessions) -

CRN 36228SEC 51

Oct 8-Dec 12TTh6:00 p.m.-9:00 p.m.

Medical interpreters are in great demand both in person and remotely by video or phone. Interpreters can elect to work for a hospital, school, or state agency, or as contractors with many agencies throughout the country. They can also elect to work remotely from home where they can work independently and make their own hours. Open to all languages, this 60-hour program provides working knowledge of medical interpreting, including standards of practice,

ethics, HIPAA regulations, cultural competency, and medical terminology/vocabulary. The course provides intense practice via oral role plays on a variety of medical topics. The student will also be introduced to VRI (Video Remote Interpreting) and OPI (Over the Phone Interpreting). Offered in collaboration with TransFluenci EDU, this course is designed for those preparing for entry-level careers as medical interpreters as well as for working interpreters preparing for the National Board Certificate exam. Students must be fully bilingual and must be fluent in English and one other language. This program meets the National Board for Medical Interpreter Certification training requirement and prepares you to pass the national certification exam. Upon successful completion of the course, students will receive a certificate of completion from the college and may elect to apply for national certification. Certification fees are not included. Students must possess a high school diploma or equivalent. Because a language assessment is required, students must register at least two weeks in advance. No class November 28. The class will be presented via Zoom.

Fee: \$1,079.00

Intro. to Quickbooks TECH 010 (4 sessions)

CRN 36595SEC 51Oct 16-Nov 6W5:30 p.m.-8:30 p.m.

Includes step-by-step instructions in getting the software up and running. We'll cover invoicing for services, accounts receivable management, entering and paying bills, accounts payable management, writing checks, managing petty cash and checking accounts, reconciling bank statements. Prerequisite: PC (preferably Windows) and mouse experience and some basic bookkeeping and/or accounting experience assumed. Instructor: Sara Gross

Fee: \$199.00

Arts

Beginning Watercolor Painting ARTS 008 (7 sessions) -

CRN 35952SEC 51Sep 9-Oct 28M6:15 p.m.-9:15 p.m.

Watercolor with no fear. Embracing the chaos is important when learning watercolor. We will start with very loose paintings and then expand into watercolor sketches. By the end of the session, we will tighten your sketches into finished piece. We will touch on landscapes, still lifes, human figures. All levels welcome but it will be geared to beginners. Materials (around \$100) are NOT Included in the tuition fee. The list of materials will be sent to students after registering to the class. Instructor: Melissa Pandina. No class on October 14

Fee: \$189.00

Beginning Drawing ARTS 019 (7 sessions) -

CRN 35951SEC 51Sep 3-Oct 15T6:15 p.m.-9:15 p.m.

Can you draw a stick figure? With practice and instruction we can easily grow that foundation into drawing realistically. Starting with a basic foundation of primitive drawing, we will create the stepping stones to drawing realistically, and we will have fun doing it. In this class we will explore shapes and shadow, negative space, rudimentary perspective, line quality and composition. All levels welcome but will be geared to beginners. Materials between \$25-\$50 NOT included Instructor: Melissa Pandina.

Fee: \$189.00

Intermediate Watercolor Painting ARTS 052 (7 sessions)

CRN 36321SEC 51Nov 4-Dec 23M6:15 p.m.-9:15 p.m.

Continue your watercolor journey. In this class we will be expanding our technique repertoire. We will also be exploring more complex subject matter like fire, water and reflections. This is a great class to get you out of your comfort zone and bring your skills to the next level while having fun. All skill levels welcome. Instructor Melissa Pandina. Materials \$25-\$100 not included in tuition fee. Students will receive the list of material after registering to the class. No class on November 11
Fee: \$189.00

Introduction to Watercolor Pencil ARTS 070 (7 sessions)

CRN 36580SEC 51Oct 22-Dec 3T6:15 p.m.-9:15 p.m.

Do you love the look of watercolors but miss the control of pencils. This hybrid medium may be your solution. This medium has all the fun of coloring but gives you a more sophisticated result. This is a great bridge medium from learning to draw to learning to paint. In this class we will be exploring still life's, landscape, animals and more. All skill levels welcome Materials \$25-\$60 are not included. Instructor Melissa Pandina.
Fee: \$189.00

Expression

Piano for Pleasure: Private Lessons for Adults

EXPR 009 (8 sessions)

CRN 35248SEC 51Sep 9-Nov 4M3:30 p.m.-6:00 p.m.

It's never too late to learn to play the piano! Learn key names, body/hand position, scales, chords, rhythmic values and note reading in a relaxed environment. Uncover a variety of musical styles, including 12 bar blues. Must have access to a piano or keyboard for practice of weekly assignment. "Play Piano Now" (#17193) published by Alfred, is available at music stores or on-line and needed for the first lesson. Upon registration, the instructor will contact you regarding a time slot. The class will be conducted over Zoom. Instructor: Marie Meder. No class October 14
Fee: \$164.00

Nia Dance

HLTH 069 (10 sessions)

CRN 36418SEC 51Sep 18-Nov 20W6:15 p.m.-7:15 p.m.

Enjoy a barefooted cardio-dance workout, energizing and conditioning the whole body! Dancing and moving to soul stirring music, Nia blends the precision and strength of the martial arts, the creative joy of the dance arts and the relaxing and restorative energy of the healing arts. While personalizing your intensity levels and through the mind body integrative action of Nia, you will find increased cardiovascular fitness, enhanced balance and flexibility as well as reducing stress and toning the body. Exercise

will never be the same again! Come experience this joyful, fun, and exhilarating movement we call Nia! All levels of fitness are welcome. (Optional to bring a yoga mat for floor work at the end of class). No class on November 24.

Fee: \$99.00

Power Yoga: Energize & Elevate HLTH 079 (4 sessions)

CRN 36597SEC 51Sep 30-Oct 28M5:30 p.m.-6:30 p.m.

Energize & uplift the body and spirit through this power yoga class designed to boost energy levels and overall fitness. This all levels class combines vinyasa flows with strength-building sequences, offering a challenging yet rewarding practice designed to leave you feeling empowered and invigorated. Benefits: Boosts energy & vitality, Increases muscle strength & endurance, Enhances flexibility and range of motion, Improves cardiovascular fitness, Promotes mental clarity and focus. Who should join? Energize & Elevate is perfect for anyone looking to challenge themselves by exploring the benefits of power yoga. Join for an invigorating practice designed to energize and strengthen your body, elevate your mood, and enhance well-being. With over two years of experience in Power Yoga and teacher training from West Hartford Yoga, Crysta Ascolillo offers classes that challenge and reward students of all levels. Passionate about fostering growth and well-being, she brings enthusiasm and support to every session, helping you cultivate strength and joy on the mat.

Fee: \$59.00

Intermediate Power Yoga: Flexibility Flow

HLTH 080 (4 sessions)

CRN 36598SEC 51Nov 4-Dec 2M5:30 p.m.-6:30 p.m.

Unlock your body's potential with Flexibility Flow, a rejuvenating power yoga class designed to enhance flexibility, lengthen muscles, and improve range of motion. This class offers a welcoming environment for all levels to explore and expand flexibility through an invigorating sequence. Benefits Increased range of motion & flexibility Improved Posture & Alignment, Enhanced Muscle Strength & Tone, Reduced Muscle Stiffness & Joint Pain, Increased relaxation & Stress Relief. This class is ideal for anyone looking to enhance their flexibility and explore power yoga. Come prepared to stretch your limits both physically and mentally and leave with a sense of lightness and freedom in your body. With over two years of experience in Power Yoga and teacher training from West Hartford Yoga, Crysta Ascolillo offers classes that challenge and rewards students of all levels. Passionate about fostering growth and well-being, she brings enthusiasm and support to every session, helping you cultivate strength and joy on the mat.

Fee: \$59.00



Food

Introduction to Bartending

FOOD 102 (7 sessions)

CRN 36458SEC 51Sep17-Nov 5T6:00 p.m.-8:00 p.m.

Get ready for the ultimate cocktail adventure at Intro to Bartending! Our emphasis on professionalism and responsible alcohol service will ensure you're equipped with the knowledge to create a safe and enjoyable environment for all. Join us to lower the odds of alcohol related incidents, offering phenomenal customer service and satisfaction, and being a driving force for community safety. Embrace this opportunity to enhance your career while fostering a secure and thriving work environment. Let's shake things up and add a splash of fun to your skills!

Fee: \$269.00

To sign up online or for complete course descriptions: www.hcc.edu/bce



Wine Tasting: California Wines

FOOD 105

CRN 36622SEC 51Sep17T6:00 p.m.-8:00 p.m.

Learn more and taste great wines from throughout California that cost less than \$25 a bottle. We'll be tasting red, white and sparkling wines from Napa, Sonoma and other lesser-known wine regions in California and learning more about each wine region. Instructor Kenneth Ross.

Fee: \$59.00

Wine Tasting Argentina & Chile Wines

FOOD 105

CRN 36623SEC 52Oct 8T6:00 p.m.-8:00 p.m.

Discover what South America's two best wine-growing countries have to offer in this wine-tasting class focusing on Argentina and Chile. We'll taste Malbecs from Argentina, Cabernet Sauvignons from Chile and learn more about other outstanding, affordable wines from both countries. Instructor Kenneth Ross.

Fee: \$59.00



Wine Tasting Spanish Wines

FOOD 105

CRN 36624SEC 53Nov 12T6:00 p.m.-8:00 p.m.

Spain produces some of the best, affordable wines in the world. This wine-tasting class will explore some of the best red, white and sparkling wines from Spain as well as provide information about Spain's best-known wine-growing regions, including Rioja and Ribera del Duero. Instructor Kenneth Ross.

Fee: \$59.00

Wine Tasting Italian Red Wines

FOOD 105

CRN 36625SEC 54Dec 10T6:00 p.m.-8:00 p.m.

Italy has long been one of the most popular wine-making countries. This wine-tasting class will focus on affordable Italian wines and include a variety of red, white and sparkling wines from throughout the country. We'll also learn more about Italy's top wine-growing regions, including Tuscany, Piedmont and more. Instructor Kenneth Ross.

Fee: \$59.00

TESTING SERVICES

ACT WorkKeys Exams

Proficiency Certificate for Teaching Assistants (PCTA)
National Career Readiness Certificate (NCRC)

Go to hcc.edu/testing to schedule your test appointment.

CASTLE Worldwide

Go to tcastleworldwide.com to register

Crane Institute of America (CIC)

Go to craneinstitute.com

HCC High Stakes Testing Center

p: 413.552.2112
f: 413.552.2745 testing@hcc.edu

GED

Go to ged.com

Get-College-Credit Exams

CLEP, DSST
Go to hcc.edu/testing to schedule your test appointment.

GRE and TOEFL

CLEP, DSST
Go to www.ets.org for registration information

HiSET Testing (Formerly GED)

Contact 413.522.2292 or hiset.ets.org to register

Kryterion

Go to www.kryteriononline.com to register

Law School Admissions Council

LSAC and MPRE
Go to www.lsac.org for registration information.

Pearson Vue

Contact the testing center to register or go to pearsonvue.com.

PSI/COMIRA

catsdoor04.com/cbt/online/login.jsp

ServSafe Exams

Go to servsafe.com to purchase your exam.
Go to hcc.edu/testing to schedule your test appointment.

Distance Learning Proctored Exams

Contact us to make an appointment to have your distance learning exams professionally proctored. Provide our contact information to your institution and your exam will be forwarded to us.

Online PROFESSIONAL DEVELOPMENT

for K-12 Educators



Designed by renowned educators - VESI online, interactive courses are convenient, superior quality courses packed with practical applications for the classroom. Earn Massachusetts PDPs in these accredited, self-paced and user-friendly programs. You'll have telephone access with instructors during "office hours" and email access with a guaranteed 24hour response time. Once HCC receives your registration, we will communicate your registration to VESI. Courses are offered in both undergraduate (UPDL) and graduate (GPD) professional development levels.

For information:

Call Community Education at **413.552.2320** or go to:



virtualeduc.com/holyoke



hcc.edu/bce

COURSE/CATEGORY	UGRAD PDPs	GRAD PDPs	COURSE/CATEGORY	UGRAD PDPs	GRAD PDPs
Classroom Management			Early Childhood		
Advanced Classroom Management	30	40	Infant & Toddler Mental Health	30	40
Behavior is Language	45	55	Language Acquisition for ESL	45	55
Building School Committees	30	40	Methods and Materials for ESL	45	55
Building School Communities	30	40	Exceptional Education		
Educational Assessment	30	40	Response to Intervention	45	55
Teaching Diversity	30	40	Attention Deficit Disorder	30	40
Common Core			Autism & Aspergers Disorder	30	40
Reading & Writing in Content Area	30	40	Learning Disabilities	45	55
Reading Fundamentals #1	30	40	Inclusion	30	40
Reading Fundamentals #2	30	40	Talented & Gifted	30	40
Reading Fundamentals #3	45	55	Social & Emotional Learning	45	55
Understanding & Implementing	45	55	Supporting At-Risk Young Learners & Their Families	45	55
Common Core Standards			Violence, Bullying & Aggression		
Teaching Elementary Math	30	40	Understanding Aggression	45	55
Six Traits of Writing	30	40	Violence in Schools	30	40
Secondary Math	45	55	Child Abuse	30	40
Differentiated Instruction			Drugs & Alcohol in Schools	30	40
Why DI?	45	55	Harassment, Bullying & Cyber-Intimidation in Schools	30	40
Try DI!	45	55	Traumatized Child	30	40
Undergraduate PDPs:	30	Fee: \$235	Undergraduate PDPs:	45	Fee: \$265
Graduate PDPs:	40	Fee: \$295	Graduate PDPs:	55	Fee: \$314

For detailed course descriptions or to sign up online, go to hcc.edu/bce



Cooking with Alka and Anjula: Love, Eat and Enjoy

FOOD 113 (1 session)

CRN 36599SEC 51Sep 16M6:00 p.m.-9:00 p.m.

Appetizer Chatpatti Chaat (gluten free, vegan) “Chaat” means finger licking good! This famous street food is a combination of unlikely textures and layers of flavors, made with parboiled potatoes, chick peas, cucumbers and tomatoes in a tongue tingling mix of seasonings and finished with tamarind and mint chutney limette dressing. Main Course Tangy Tamarind Eggplant & Potatoes: (gluten free) A delicate dish of fresh Eggplant & potatoes gently simmered in a provocative sauce of caramelized onions, garlic and ginger in coconut milk, mustard & fennel seeds with fresh curry leaves. Coconut Vegetable Khichdi: (gluten free) Therapeutic and nutritious! Healthy blend of Moong lentils, fresh Carrots, Scallions, and rice prepared with digestive spices and topped with homemade Ghee. Fresh Curry leaves & Pomegranate scented Raita: (gluten free) The name says it all! A delicious partnership with all flavors!

Fee: \$129.00

Home and Garden

Getting to Know Your Sewing Machine

HOME 025 (1 session)

CRN 36593SEC 51Sep 17T5:30 p.m.-8:30 p.m.

In this one shot class Andrea will be a resource for students to help them understand how to use their sewing machines. Beginners will leave confident of how to thread their own machine, wind a bobbin and sew a simple draw string bag. The first half of the class will feature one on one interaction with students to make sure they can thread and wind a bobbin. Following the threading can be challenging at first. As students become more familiar with the threading they will move on to some stitching of straight lines to get better control of the speed and how the fabric and machine work together. Fabric and drawstrings will be provided. Students will also learn how to make a drawstring bag with step by step instruction. If time permits, we may also explore zig-zag stitches, hem stitch and zipper foot. Sign up for this interactive beginner's class now!

Fee: \$39.00

Beginner Sewing with Andrea Zax

HOME 026 (4 sessions)

CRN 36591SEC 51Sep 24-Oct 15T6:00 p.m.-8:00 p.m.

If you have always wanted to sew and feel you need some hands-on guidance come to this class. Do you want to make a pillow, placemats or hem some pants? Bring your sewing machine, project ideas and come to this class. We will review how to thread and set up your machine and then start sewing! Bring some woven cotton or cotton blend fabric, thread to match, scissors for fabric, seam ripper, measuring tape, pins, a note book to write in and enthusiasm to sew!

Fee: \$99.00

Be Your Own Designer

HOME 030 (4 sessions)

CRN 36588SEC 51Sep 17-Oct 8T6:00 p.m.-8:00 p.m.

Understanding the fundamentals of design... Space, Line, Form, Light, Color, Texture and Pattern..... And how to use these elements to create a visually pleasing and functional space. Instructor Joann Athas.

Fee: \$125.00



Languages, Legal/Estate Planning, Education

Discover Your Hue

HOME 031 (4 sessions)

CRN 36589SEC 51Oct 15-Nov 5T6:00 p.m.-8:00 p.m.

Understanding color psychology, which is crucial in creating spaces that evoke the desired emotional atmosphere in your home. This will be a journey to discover the language of color. Instructor Joann Athas.

Fee: \$125.00

Sewing with Pattern

HOME 033 (4 sessions)

CRN 36594SEC 51Nov 12-Dec 3T6:00 p.m.-8:00 p.m.

In the first class I will show you a few patterns. I will show you how to take good measurements and how to read the views and fabric amounts you will need to make your desired garment. First find a simple pattern- they have patterns marked easy or beginner. I want you to have a good experience and not be frustrated with a complicated garment on your early attempts at making clothing. Then measurements can be frustrating and you might think, "that's not my size!" Get the pattern that includes your largest measurements. DON'T be scared off by large sounding sizes. You want to make something that fits you! I recommend woven cotton or cotton blend fabric and wash the fabric before you come to class, you don't want to make a garment and then wash it to find it shrinks. Knit fabrics are nice but not good for a beginner sewer. Satin and rayon are lovely but have some challenges to work with. Raw silk is very nice but tends to be expensive and may make the beginner sewer nervous. Polar fleece is relatively easy to work with although quite thick.

Fee: \$99.00

Languages

Basic Conversational French 1

LANG 005 (7 sessions)

CRN 35796SEC 51Sep 10-Oct 22T6:00 p.m.-8:00 p.m.

Introduction to the French culture via fun conversations. The goal of the class is to cover different topics such as introducing yourself, talking about your family, making arrangement for a trip... The first building blocks needed for achieving proficiency in the French language will be emphasized. We'll also review culture, customs and French influence around the world. Gain more confidence in conversing in French. Instructor Ingrid Vega.

Fee: \$179.00

Conversational French 2

LANG 006 (7 sessions)

CRN 36583SEC 51Oct 29-Dec 17T6:00 p.m.-8:00 p.m.

Introduction to the French culture via fun conversations. The goal of the class is to emphasize the ability of each student to discuss topics such as holidays, services and travel using everyday expressions. The class will prepare you with the basic foundation for a safe and fun "sejour" in France or other francophone countries. At the end of the course, you will have a better understanding of the French culture and will be more confident in conversing in French. Suggested prerequisite: a basic knowledge in French grammar. Instructor Ingrid Vega.

Fee: \$179.00

Conversational Spanish 2

LANG 009 (7 sessions)

CRN 36585SEC 51Oct 8-Nov 19T6:00 p.m.-8:00 p.m.

Build upon the key sounds, vocabulary, and phrases. Use everyday expressions to discuss topics such as shopping, holidays and travel and making arrangements while having fun in the process. Instructor Karolina Kopczynski.

Fee: \$179.00

Conversational Polish 2

LANG 044 (7 sessions)

CRN 36590SEC 51Sep 12-Oct 24T6:00 p.m.-8:00 p.m.

An introduction and continuation of Polish 1 class focusing on achieving proficiency in speaking and understanding the Polish language through Polish culture, customs, history, and Polish influences worldwide. You'll finish the workshop having had some degree of success in conversing in Polish. Instructor Karolina Kopczynski.

Fee: \$179.00

Legal / Estate Planning

Estate Planning 101

LEGL 016 (3 sessions)

CRN 36596SEC 51Oct 3-17T6:00 p.m.-7:30 p.m.

In this high level overview of Estate Planning, students will have a brief introduction to several aspects of Estate Planning including the Health Care Proxy, Advance Directives and the differences between an Advance Directive, Living Will, DNR, and MOLST, HIPAA Releases etc. Also covered will be the risks of jointly titled property, the importance of the Power of Attorney, the two types of POAs as well as the key provisions in a well-drafted POA. The Probate process will also be covered including what is probate and why it is needed, the three ways to avoid probate, the importance of the Will and most importantly, the key provisions in a well-drafted Will. Instructor Atty. Karen Jackson

Fee: \$179.00

Retirement Planning

MONY 009 (2 sessions)

CRN 35395SEC 51Oct 8-15T6:00 p.m.-9:00 p.m.

Will you be financially ready to retire at the age you're planning? If you haven't started planning, how do you begin the process? In this comprehensive retirement planning course, learn strategies on how to: create your own goals for a successful retirement; plan your retirement income to preserve a comfortable standard of living; transfer the risk of potential losses before and during retirement; remain financially flexible during retirement; reduce or eliminate taxes, expenses, delays and legal challenges with estate planning. Program includes free Text/Reference Guide and Personal Financial Fact Finder. Non-credit tuition includes couples. Instructor Jack Yvon.

Fee: \$75.00

Social Security Income Enhancing Strategies

MONY 062 (1 session)

CRN 35397 SEC 51Oct 23W6:00 p.m.-8:00 p.m.

Many people start taking social security as soon as possible... but is this the best choice for you? Learn how to maximize your social security and survivor benefits. Strategies for those that are single, married, divorced and widowed will be discussed. Cost of living adjustments, taxation of benefits and working while collecting social security will be explained. Coordinating other retirement accounts with social security distributions and Required Minimum Distribution rules will be explained to assist you in making informed decisions. Workbook included. Instructor: Susan Allen.

Fee: \$49.00

Education (Pre-School, K-12)

Advanced Classroom Management: Children as Change Agents

EDUC 001

CRN 35198SEC

CRN 35199SEC

Focuses on cognitive and cognitive-behavioral interventions with emphasis on teaching students how to change and manage their own behavior. Knowledge and understanding of traditional behavioral concepts and strategies is required. Strongly recommended that participants have completed an introductory behavior management course prior to taking this course. 40 Graduate PDPs This course requires additional writing assignments. Students must achieve at least an average of 80% in all exams with no exam below 70%.

Fee: \$295.00

To sign up online or for complete course descriptions: www.hcc.edu/bce





Attention Deficit/Hyperactivity Disorder

EDUC 002

CRN 35200SEC 51

CRN 35201SEC 52

Achieve a better understanding of ADD and intervention strategies to facilitate positive student change. Covers the history of the disorder, accepted methods to assess and identify students with the disorder, and various methods, medications, and strategies that are currently used to treat it. For situations in which services beyond what can be provided in the classroom are required, the referral process for getting help for the student will be addressed. Reference materials include a list of resources for both teachers and parents. 40 Graduate PDPs This course requires additional writing assignments. Students must achieve at least an average of 80% in all exams with no exam below 70%.

Fee: \$295.00

Autism & Aspergers Disorder

EDUC 003 (30 sessions)

CRN 35202SEC 51

CRN 35203SEC 52

Explores the characteristics and learning styles associated with the disorder, communication weaknesses, and successful intervention strategies that enhance more appropriate behavior. This course also provides resources for educators, related service personnel, and parents who seek more help or information. 40 Graduate PDPs This course requires additional writing assignments. Students must achieve at least an average of 80% in all exams with no exam below 70%.

Fee: \$295.00

Behavior is Language: Strategies for Managing Disruptive Behavior

EDUC 004

CRN 35204SEC 51

CRN 35205SEC 52

Learn behavioral techniques and intervention strategies that remediate disruptive behaviors, reduce power struggles, increase classroom control, and reduce your workloads and burnout. Helps you, as well as students, find creative, effective solutions to behavioral problems. 55 Graduate PDPs This course requires additional writing assignments. Students must achieve at least an average of 80% in all exams with no exam below 70%.

Fee: \$314.00

Addressing Child Abuse: Working with Abused & Neglected Children

EDUC 005

CRN 35206SEC 51

CRN 35207SEC 52

Encompasses the identification of physical, emotional, sexual, and substance abuse; the impact of abuse on the behavior and learning abilities of students; the responsibilities of a teacher to report or provide assistance to victims of abuse; and methods for teaching students about abuse and its prevention. Discusses family dynamics and working with parents and community agencies. Emphasis is on understanding the special learning needs of the abused or neglected child, and how to meet those needs in the classroom. 40 Graduate PDPs This course requires additional writing assignments. Students must achieve at least an average of 80% in all exams with no exam below 70%.

Fee: \$295.00

Drugs & Alcohol in Schools: Understanding Substance Use & Abuse

EDUC 006

CRN 35208SEC 51

CRN 35209SEC 52

Presents a contextual framework for understanding what students may be experiencing through their own substance use or the impact of substance use around them. Includes a historical perspective along with descriptions of the complex biological,

psychological, and social factors that comprise the disease of addiction. 40 Graduate PDPs This course requires additional writing assignments. Students must achieve at least an average of 80% in all exams with no exam below 70%.

Fee: \$295.00

Educational Assessment: Assessing Student Learning in the Classroom

EDUC 007

CRN 35210SEC 51

CRN 35211SEC 52

This course focuses on informal assessment measures in the academic and social skills areas and outlines procedures for designing or selecting, administering, and interpreting a variety of measures typically used in schools. The presentation of assessment information to parents and teachers will also be addressed. 40 Graduate PDPs This course requires additional writing assignments. Students must achieve at least an average of 80% in all exams with no exam below 70%.

Fee: \$295.00

Harassment, Bullying & Cyber-Intimidation in Schools

EDUC 008

CRN 35212SEC 51

CRN 35213SEC 52

Discusses definitions and the personal, social, and legal ramifications associated with sexual harassment, bullying, and cyber-intimidation, explore preventative strategies as well as how school staff can address these issues when they occur. A clear understanding of what

Education

constitutes harassment and the harmful effects of harassment on people and institutions is essential to providing a safe and inclusive school environment for all. 40 Graduate PDPs This course requires additional writing assignments. Students must achieve at least an average of 80% in all exams with no exam below 70%.

Fee: \$295.00

Inclusion: Working with Students with Special Needs in Classrooms EDUC 009

CRN 35214SEC 51

CRN 35215SEC 52

Understand concepts and terms related to educating students in inclusive classrooms and learn about the continuum of placements school systems can use in providing special education services to students with disabilities. Course also identifies and describes the roles and responsibilities of special and general educators in inclusive classrooms. 40 Graduate PDPs This course requires additional writing assignments. Students must achieve at least an average of 80% in all exams with no exam below 70%.

Fee: \$295.00

To sign up online or for complete course descriptions: www.hcc.edu/bce



Infant & Toddler Mental Health: Issues & Information for Educators EDUC 010

CRN 35216SEC 51

CRN 35217SEC 52

Understand and identify your role as a child care provider, educator, and early childhood professional. Includes research-based information on child development, attachment, temperament, and curriculum, and resources for teachers and parents who would like more help or information. 40 Graduate PDPs This course requires additional writing assignments. Students must achieve at least an average of 80% in all exams with no exam below 70%.

Fee: \$295.00

Learning Disabilities: Practical Information for the Classroom Teacher EDUC 011

CRN 35218SEC 51

CRN 35219SEC 52

Covers diverse theoretical approaches, lays the foundations for appropriate assessment of students, provide directions for program planning and implementation, underscores the importance of a close partnership with parents or caregivers, and considers trends and unresolved issues in the field. 55 Graduate PDPs This course requires additional writing assignments. Students must achieve at least an average of 80% in all exams with no exam below 70%.

Fee: \$314.00

Reading Fundamentals 1: An Introduction to Scientifically-based Research e) EDUC 012

CRN 35220SEC 51

CRN 35221SEC 52

The first in a three-course series on effective reading instruction, this course provides background on Reading First as it applies to No Child Left Behind federal legislation. Discusses scientifically based research as it applies to phonetically based instruction, assessment, and evaluation; explores myths and misconceptions concerning reading instruction and remediation; and presents an evaluation checklist to assess the effectiveness of your current reading program. 40 Graduate PDPs This course requires additional writing assignments. Students must achieve at least an average of 80% in all exams with no exam below 70%.

Fee: \$295.00

Reading Fundamentals 2: Laying the Foundation for Effective Reading Instruction EDUC 013

CRN 35222SEC 51

CRN 35223SEC 52

This three-course series helps improve your knowledge of science and the scientific process, making you a more informed consumer and a better advocate for students. This second course lays the foundation for effective reading instruction through examination of its importance as well as statistics on reading proficiency and performance in this country. 40 Graduate PDPs This course requires additional writing assignments. Students must achieve at least an average of 80% in all exams with no exam below 70%.

Fee: \$295.00

Reading Fundamentals 3: The Elements of Effective Reading Instruction & Assessment EDUC 014

CRN 35224SEC 51

CRN 35225SEC 52

Focuses on learning to read and an introduction to reading assessment. The five elements of effective reading instruction (phonemic awareness, phonics, fluency, vocabulary, and text comprehension) are highlighted, including definitions, implications for instruction, and future directions. Includes information on comprehension strategy instruction and reading instruction, assessment terms and definitions, and how reading assessment fits within the Reading First Program. Also covers technology integration in the classroom, specific recommendations on reading



assessments, and how teachers can conduct pivotal curriculum-based measurements in their classrooms. 55 Graduate PDPs This course requires additional writing assignments. Students must achieve at least an average of 80% in all exams with no exam below 70%.

Fee: \$314.00

Talented & Gifted: Working with High Achievers

EDUC 015

CRN 35226SEC 51

CRN 35227SEC 52

Includes identification, referral, assessment, and major program models and methods of differentiating instruction to meet the rate and level of learning of those students in the regular classroom. Also includes current law, the history of the exceptional in education, and resources for teachers and parents who would like more information about the talented and gifted. 40 Graduate PDPs This course requires additional writing assignments. Students must achieve at least an average of 80% in all exams with no exam below 70%.

Fee: \$295.00

Teaching Diversity: Influences & Issues in the Classroom

EDUC 016

CRN 35228SEC 51

CRN 35229SEC 52

Understand how learning is influenced by individual experiences, talents, disabilities, gender, language, culture, family, and community values, and identify differences in approaches to learning and performance, including diverse learning styles and ways in which students demonstrate learning. 40 Graduate PDPs This course requires additional writing assignments. Students must achieve at least an average of 80% in all exams with no exam below 70%.

Fee: \$295.00

Traumatized Child: The Effects of Stress, Trauma & Violence on Student Learning

EDUC 017

CRN 35230SEC 51

CRN 35231SEC 52

Identify and effectively teach students affected by stress, trauma, and/or violence. Discusses the factors that exist in families and communities where stress and violence are common. Emphasis on understanding and meeting the special learning needs of the student in the regular classroom, and working with parents and community agencies. 40 Graduate PDPs This course requires additional writing assignments. Students must achieve at least an average of 80% in all exams with no exam below 70%.

Fee: \$295.00

Understanding Aggression: Coping with Aggressive Behavior in the Classroom

EDUC 018

CRN 35232SEC 51

CRN 35233SEC 52

Addresses to the hate, fights, anger, crimes committed and the victims in our schools and society, considers the many forms of aggression, both criminal and otherwise, its costs and motivation, its perpetrators and targets, its likely and unlikely locations, its impact on our schools and children; and, most especially, its several causes and promising solutions. 55 Graduate PDPs This course requires additional writing assignments. Students must achieve at least an average of 80% in all exams with no exam below 70%.

Fee: \$314.00

Violence in Schools: Identification, Prevention & Intervention Strategies

EDUC 019

CRN 35234SEC 51

CRN 35235SEC 52

Provides a foundational understanding of violence and the motivational purposes behind aggression, and investigates the impact of the media, community, and family. You'll receive information on national resources for parents and teachers. 40 Graduate PDPs This course requires additional writing assignments. Students must achieve at least an average of 80% in all exams with no exam below 70%.

Fee: \$295.00

Teaching Elementary Math Conceptually: A New Paradigm

EDUC 020

CRN 35236SEC 51

CRN 35237SEC 52

The course will explore an innovative teaching model that incorporates strategies for teaching concepts constructively and contextually. The goal is for you to gain a deeper understanding of the underlying concepts of various math topics and explore the principles of teaching those concepts to learners. This course will focus on the topics of number sense, basic operations, and fractions. 40 Graduate PDPs This course requires additional writing assignments. Students must achieve at least an average of 80% in all exams with no exam below 70%.

Fee: \$295.00

Why DI? An Introduction to Differentiated Instruction

EDUC 022

CRN 35238SEC 51

CRN 35239SEC 52

Designed to give you an understanding of the framework of and need for creating supportive learning environments for diverse learning populations. In this course you will learn what is meant by Differentiated Instruction (DI) and the common myths associated with creating the differentiated classroom. We will discuss the legal, theoretical, and pedagogical foundations in the field of education that support the utilization of differentiated instructional practices and principles. We will reflect on best practices and national trends in the design of the educational setting to meet the needs of a diverse learning population. Why DI?: An Introduction to Differentiated Instruction will also provide connections to a variety of concepts, variables, and resources that will assist practitioners in aligning their own professional practices with those found in the differentiated classroom. 55 Graduate PDPs This course requires additional writing assignments. Students must achieve at least an average of 80% in all exams with no exam below 70%.

Fee: \$314.00

Reading & Writing in Content Area

EDUC 024

CRN 35242SEC 51

CRN 35243SEC 52

Reading & Writing in Content Area offers instruction in teaching reading and writing in various subject matter fields at the secondary level. The material stresses the skills of vocabulary building, comprehension, and writing, as well as methods for motivating adolescents to read and write. The course also provides information on recognizing reading difficulties, assessing textbooks, and the integration of reading strategies within a content area. The strategies taught are aligned with the Praxis Reading Across the Curriculum test guide and the Reading in the Content Area national standards. 40 Graduate PDPs This course requires additional writing assignments. Students must achieve at least an average of 80% in all exams with no exam below 70%.

Fee: \$295.00

Try DI! Planning & Preparing a Differentiated Instruction

EDUC 025

CRN 35244SEC 51

CRN 35245SEC 52

Try DI! is designed to provide you an opportunity to learn about an instructional framework, Differentiated Instruction (DI), aimed at creating supportive learning environments for diverse learning populations. Students will be presented a method for self-assessment of the extent to which their current instructional approach reflects the perspective, principles, and practices of the DI approach. The course reflects an approach that aligns the principles of DI with the practices of DI. The concept of a “theory of action” will also be provided within a DI context. The course has also been designed to introduce students to a range of strategies associated with a DI approach. Strategies included in this course have been selected on the basis that they are effective in the widest possible range of educational K-12 settings. This course follows Why DI?: An Introduction to Differentiated Instruction, which addressed the What, Why, and Who of a classroom that reflects a DI approach. The focus of Try DI!: Planning & Preparing a Differentiated Instruction Program is on the When, Where, and How of the DI approach. 55 Graduate PDPs This course requires additional writing assignments. Students must achieve at least an average of 80% in all exams with no exam below 70%. Fee: \$314.00

Understanding & Implementing Common Core Standards

EDUC 026

CRN 35246SEC 51

CRN 35247SEC 52

This course, Understanding & Implementing Common Core Standards, has been divided into four chapters. The organization of the course covers the rationale for and design of the Common Core State Standards, the “Common Core Mindset” practitioners need for successful implementation, and what specific actions can be taken for deeper implementation across settings. 55 Graduate PDPs This course requires additional writing assignments. Students must achieve at least an average of 80% in all exams with no exam below 70%. Fee: \$314.00

Response to Intervention: Practical Information for the Classroom Teache

EDUC 031

CRN 35830SEC 51

CRN 35831SEC 52

Response to Intervention or RTI is a process schools can and should use to help students who are struggling with academics or behavior. Even though RTI is primarily linked to special education and the early identification of learning problems, RTI is not just for students in special education. RTI is for all students and is based on the premise that a student might be struggling due to instruction or the curriculum in the past or current classroom. All teachers have students who are struggling and whether it's short term or long term, RTI is a valuable tool. Learn how to effectively use it in your classroom. •Students have 6 months to complete course from the time of registration; •You must have a minimum score of 80%25 on each examination to pass; •This course requires additional writing assignments; •We recommend that you check with your school district/supervisor to verify which level you should enroll in (Undergraduate Professional Development Level or Graduate Professional Development Level)and whether or not these course offerings will meet your district requirements for state certificate re-licensure. Fee: \$314.00

Six Traits of Writing Model: Teaching & Assessing

EDUC 034

CRN 35889SEC 51

CRN 35890SEC 52

This course will discuss why writing is important and why teachers should include writing as often as possible in all content areas. The course will also include practical applications for assessing and teaching writing, including teaching students how to self-assess their own writing. The first chapter of this course will discuss why teaching writing is important and give you an introduction to the Six Traits of Writing Model. Through chapters 2, 3, and 4 we will discuss the elements of the Six Traits of Writing Model. Throughout those elements we will look at practical ways to use this model in your classroom. \$280.00 • Students have 6 months to complete course from the time of registration; • You must have a minimum score of 80%25 on each examination to pass; • This course requires additional writing assignments; • We recommend that you check with your school district/supervisor to verify which level you should enroll in (Undergraduate Professional Development Level or Graduate Professional Development Level) and whether or not these course offerings will meet your district requirements for state certificate re-licensure.

This course will discuss why writing is important and why teachers should include writing as often as possible in all content areas. The course will also include practical applications for assessing and teaching writing, including teaching students how to self-assess their own writing. The first chapter of this course will discuss why teaching writing is important and give you an introduction to the Six Traits of Writing Model. Through chapters 2, 3, and 4 we will discuss the elements of the Six Traits of Writing Model. Throughout those elements we will look at practical ways to use this model in your classroom. •Students have 6 months to complete course from the time of registration; •You must have a minimum score of 80%25 on each examination to pass; •This course requires additional writing assignments; •We recommend that you check with your school district/supervisor to verify which level you should enroll in (Undergraduate Professional Development Level or Graduate Professional Development Level). Fee: \$295.00

Teaching Secondary Math Conceptually: Meeting Mathematics Standards

EDUC 035

CRN 35891SEC 51

CRN 35892SEC 52

This course will explore an instructional methodology that incorporates strategies for teaching concepts, constructively, and contextually. The goal is for you to gain a deeper understanding of the underlying concepts of various math topics and explore the principles of teaching those concepts to learners. The course will also explore teaching methodologies that support many federal and state standards. This course will focus on the topics of integers, fractions, factoring, and functions. •Students have 6 months to complete course from the time of registration; •You must have a minimum score of 80% on each examination to pass; •This course requires additional writing assignments; •We recommend that you check with your school district/supervisor to verify which level you should enroll in (Undergraduate Professional Development Level or Graduate Professional Development Level) and whether or not these course offerings will meet your district requirements for state certificate re-licensure. Fee: \$314.00

To sign up online or for complete course descriptions: www.hcc.edu/bce



Language Acquisition for ESL Students

EDUC 037

CRN 36066SEC 51

CRN 36067SEC 52

Language Acquisition was written to help teachers understand concepts and terms related to educating students whose first language is not English. This course discusses developmental theories and how they apply to English language learners. The focus of this course is on the process of second language acquisition and the role of the classroom teacher. Included in this course is information about the legal obligations of schools and teachers to provide services and about the types of programs schools might provide. Included is information on communicating with parents/guardians •Students have 6 months to complete course from the time of registration; •You must have a minimum score of 80% on each examination to pass; •This course requires additional writing assignments; •We recommend that you check with your school district/supervisor to verify which level you should enroll in (Undergraduate Professional Development Level or Graduate Professional Development Level) and whether or not these course offerings will meet your district requirements for state certificate re-licensure. **Fee: \$314.00**

Methods & Materials for Teaching ESL Students

EDUC 038 (45 sessions)

CRN 36068SEC 51

CRN 36069SEC 52

Methods & Materials was written to help teachers understand concepts and terms related to educating students whose first language is not English. This course discusses how to apply instructional methods in creating lessons; how to create a motivating and caring learning environment; how to integrate teaching reading, writing, speaking, and

listening skills; how to differentiate instruction for English language learners; and how to identify culturally appropriate curriculum and instructional resources. •Students have 6 months to complete course from the time of registration; •You must have a minimum score of 80%25 on each examination to pass; •This course requires additional writing assignments; •We recommend that you check with your school district/supervisor to verify which level you should enroll in (Undergraduate Professional Development Level or Graduate Professional Development Level) and whether or not these course offerings will meet your district requirements for state certificate re-licensure. **Fee: \$314.00**

Building School Communities

EDUC 039 (30 sessions)

CRN 36083SEC 51

CRN 36084SEC 52

This course helps teachers build genuine bonds between themselves and their students and between students and their classmates, to create “kindred classhomes” with a foundation of acceptance, respect, and shared purpose. For many of our students, our classrooms may be a safe, nurturing refuge...the eye of the hurricane they experience as life. This course will help you develop strategies, rituals, and environmental design skills to create these safe havens of learning: kindred classhomes where students and teachers work together in synergistic ways that benefit all members of the school family. Students will learn how to differentiate for classroom management and discipline similarly to differentiating for students’ diverse academic needs. One size does not fit all, but all sizes can fit together. • Students have 6 months to complete course from the time of registration; • You must have a minimum score of 80% on each examination to pass; • This course requires additional writing assignments; • We recommend that you check with your school district/supervisor to verify which level you should enroll in (Undergraduate Professional Development

Level or Graduate Professional Development Level) and whether or not these course offerings will meet your district requirements for state certificate re-licensure.

Fee: \$295.00

Supporting At-Risk Young Learn

EDUC 040 (45 sessions)

CRN 36414SEC 51

CRN 36415SEC 52

This course is designed to help Early Childhood Educators gain strategies to reach and teach young children who are at risk of not meeting their potential. Participants will learn the internal and external factors that place a child at risk, how heredity and environment affect a child’s development, the characteristics of various risk factors, and interventions for each risk factor. A major emphasis will be on the family’s influence on the child’s development and how Early Childhood Educators can work with families to support their child’s growth in all areas of development. The Graduate level requires writing assignments Students must achieve at least an average of 80% in all exams with no exam below 70%. **Fee: \$314.00**

Social & Emotional Learning

EDUC 041 (45 sessions)

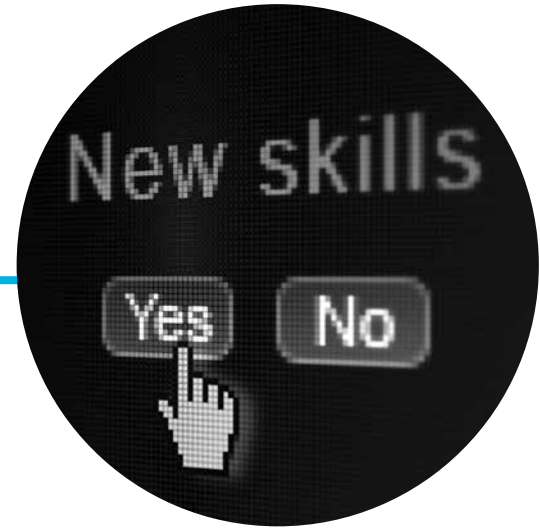
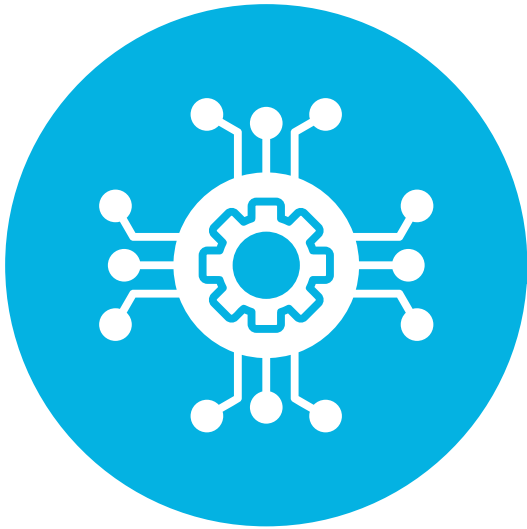
CRN 36416SEC 51

CRN 36417SEC 52

Social-emotional learning (SEL) comprises life skills that are foundational to motivation in the classroom and classroom management. Students who have strong social and emotional skill sets will be more successful in the classroom and in life. In this course, students will first examine what SEL is, including the research foundational to SEL. Then students will examine the five SEL competencies— self-awareness, self-management, social awareness, relationship skills, and responsible decision-making—and how each of these can be developed first in the classrooms and then in the schools to optimize learning environments. While examining the five SEL competencies, students will also investigate how these skill sets can affect families and communities. • Students have 6 months to complete course from the time of registration; • You must have a minimum score of 80% on each examination to pass; • This course requires additional writing assignments; • We recommend that you check with your school district/supervisor to verify which level you should enroll in (Undergraduate Professional Development Level or Graduate Professional Development Level) and whether or not these course offerings will meet your district requirements for state certificate re-licensure.

Fee: \$314.00





Tech Hub Provides Free Digital Skills and Technology

Tech Foundry, in partnership with Holyoke Community College, has opened the new Tech Hub at the HCC Picknelly Adult and Family Education Center, located at 206 Maple Street, Holyoke.

TECH HUB OFFERS:



- free services and classes
- digital skills training workshops
- walk-in IT support and troubleshooting
- Internet connectivity consultations
- computer distribution (free in limited quantities)

Tech Hub is a program of the Springfield-based nonprofit Tech Foundry, the regional leader in IT workforce development and training. Tech Hub was started in 2023 as part of a state-wide initiative of the Western Massachusetts Alliance for Digital Equity.

Tech Hub will be open noon to 6 p.m. on Tuesdays, Wednesdays, and Thursdays, with classes held from noon to 1 p.m. and 5-6 p.m.

Visit techhubmass.net to learn more, sign up for classes, and access Tech Hub help-desk support.

Help nurture your child's curiosity and creativity.

Check out BLACKROCKET online programming for youth aged 8 to 14.



COURSE NAME	AGES	DATES	TIME	
Minecraft Club	8-14	9/27/2024 – 11/1/2024	6:30 PM – 7:30 PM	F
ROBLOX Makers	8-14	9/28/2024 – 11/2/2024	10:30 AM – 12:30 PM	Sa
Coding Academy	8-14	10/7/2024 – 10/30/2024	5:00 PM – 6:30 PM	M,W
A.I. Adventures – Intro to Machine Learning	8-14	10/8/2024 – 11/5/2024	6:30 PM – 8:00 PM	T,Th
Minecraft Modders	8-14	10/8/2024 – 11/5/2024	5:00 PM – 6:30 PM	T,Th
UNREAL Gaming Academy	13-7	10/12/2024 – 12/21/2024	10:30 AM – 12:30 PM	Sa
Python Programmers	8-14	11/4/2024 – 11/27/2024	5:00 PM – 6:30 PM	M,W
Roblox Club	8-14	11/8/2024 – 12/20/2024	6:30 PM – 7:30 PM	F
A.I. Adventures Intro to Machine Learning	8-14	11/9/2024 – 12/14/2024	10:30 AM – 12:30 PM	Sa
YouTube Content Creators	8-14	11/9/2024 – 12/14/2024	10:30 AM – 12:30 PM	Sa
Make Your First Video Game!	8-14	11/14/2024 – 12/12/2024	6:30 PM – 8:00 PM	T,Th
Young Investors & Entrepreneurs	11- 14	11/14/2024 – 12/12/2024	5:00 PM – 6:30 PM	T,Th

Register here for online programs:
blackrocket.com/online/hol



CERTIFICATES | DEGREES

CERTIFICATES

Accounting
Addiction Studies
Cannabis Cultivation Child Development
Clean Energy
Community Health Worker
Culinary Arts
Cyber Security
Deaf Studies
Developmental Disabilities Direct Support
Direct Care Worker
Graphic Design
Hospitality Management
Human Resource Management
Human Services
Infant/Toddler and/or Preschool Marketing
Medical Assistant
Medical Billing & Coding
Mental Health Studies Music Performance
Practical Nursing
Veterinary Assistant

**HOLYOKE
COMMUNITY
COLLEGE**

DEGREES

Accounting
Applied Technology
Behavioral Neuroscience Biology
Biotechnology
Business Administration Chemistry
Child and Family Studies
Clean Energy
Communication
Communication, Media & Theater Arts Computer
Science
Computer User Support
Creative Writing
Criminal Justice
Critical Social Thought
Culinary Arts
Cyber Security & Digital Forensics
Deaf Studies
Early Education and Care
Education - Elementary
Education - Secondary Engineering
English
Environmental Science
Foundations of Health Geoscience
Graphics
Hospitality Management
Human Resource Management Human Services
Information Technology
Latinx Studies
Liberal Arts and Science Marketing
Mathematics
Music
Natural Resources Nursing*
Physics
Psychology
Radiologic Technology*
Sociology
Sport Management
Theater Arts
University Without Walls
Veterinary Technician*
Visual Art

**Nursing, Practical Nursing, Radiologic Technology and Veterinary Technician programs have a competitive admission process and require attendance at a mandatory information session, offered each month. Check hcc.edu/explore for a listing of information sessions for your program of interest.*

CERTIFICADOS

Contabilidad
Estudios de Toxicomanía
Cultivo de Cannabis
Desarrollo Infantil
Energía Limpia
Trabajador de Salud Comunitaria
Artes Culinarias
Ciberseguridad
Estudios de la Sordera
Discapacidades del Desarrollo Apoyo Directo
Trabajador de Cuidado Directo
Diseño Gráfico
Gestión de Hotelería
Gestión de Recursos Humanos
Servicios Humanos
Bebé/Niño Pequeño y/o Preescuela
Mercadeo
Asistente Médico
Facturación y Codificación Médica
Estudios de Salud Mental
Interpretación Musical
Enfermería Práctica
Asistente de Veterinario

HOLYOKE
COMMUNITY
COLLEGE

TÍTULOS

Contabilidad
Tecnología Aplicada
Neurociencia del Comportamiento Biología
Biotecnología
Administración de Empresas Química
Estudios Infantiles y de Familia
Energía Limpia
Comunicación
Comunicación, los Medios y el Teatro Informática
Asistencia al Usuario Informático Escritura Creativa
Justicia Penal
Pensamiento Social Crítico
Artes Culinarias
Ciberseguridad y Análisis Forense Digital Estudios
de la Sordera
Cuidado y Educación Temprana Educación -
Primaria
Education - Secundaria Ingeniería
Inglés
Ciencias Ambientales
Fundamentos de la Salud Geociencia
Gráficos
Gestión de Hotelería
Gestión de Recursos Humanos Servicios Humanos
Tecnología Informática y Estudios Latinos
Artes Liberales y Ciencias Mercadeo
Matemáticas
Música
Recursos Naturales Enfermería*
Física
Psicología
Tecnología Radiológica* Sociología
Gestión Deportiva
Artes Teatrales
Universidad sin Barreras Técnico Veterinario*
Artes Plásticas

CERTIFICADOS | TÍTULOS

**Los programas de enfermería, enfermería práctica, tecnología radiológica y técnico veterinario son competitivos y requieren la asistencia a una sesión de información obligatoria ofrecida cada mes.*

Consulta hcc.edu/explore para la lista de sesiones de información sobre el programa que te interesa.

Start your tech career with Upright technology bootcamps.

UX/UI Bootcamp:

Duration: 12 Weeks
Time Commitment:
Full-Time;
Mon - Fri 9 AM - 5 PM (EST)
Total Hours: 480
Cost: \$10,000

Job Titles: Product Designer, UX Designer, UX/UI Designer, Jr. UX/UI Designer, Marketing Coordinator, Project Coordinator, UX/UI Copywriter, Technical Operations Manager, Strategic Account Manager

The Opportunity: Immerse yourself in the world of UX/UI (product) design by learning the research methods and design practices used by industry professionals to change your career into a high-demand, high-growth, and high-paying industry. Obtain not only a technical and design education but also develop critical skills to obtain a successful and sustainable career! Our UX/UI graduates see an average salary increase of 30.75% upon graduation (\$12,300 on average).

Program Benefits: In addition to learning skills that employers need for UX/UI candidates, our graduates are job-ready upon graduation with the assistance of our Career Services team. While in class, our students learn about the design industry, career pathways,

the job market, and the job search process. They also receive a customized job search strategy and unlimited 1:1 career coaching. Alongside technical instruction and Career Services, students develop their interpersonal skills through collaboration. They work on a real-world project with a real company that further enhances their experience in speaking the industry language and building the skills necessary to contribute to a team effectively. Network weekly with guest speakers from the industry where we hear from different UX/UI designers, managers, and more!

What You Will Learn: User interface (UI) design is the process of creating the outward-facing appearance of a website or application, while the process of gathering research and using data to inform design decisions is referred to as user experience (UX) design. In this course, you learn both. Starting with the fundamentals, you will quickly advance through topics of increasing complexity, applying creative problem-solving skills to design and iterating on your designs based on research. You will learn how to defend your designs with data using the performance metrics you create. Lastly, you will leave this course knowing how to clearly implement every step of the design process, from concept to full-scale design prototypes.

Software Development Ignition:

Duration: 10 Weeks
Time Commitment:
Part-Time;
Mon & Wed 6 PM - 9 PM (EST)
Total Hours: 60
Cost: \$4,000

The Opportunity: JavaScript Ignition is an introductory course perfect for anyone new to the field or just starting out. This course is designed for people who are interested in exploring coding as a career or for professionals who are already working in technology that will benefit from learning the practical and highly sought-after skills taught in this course.

Program Benefits: This course is a 10-week, 2 nights a week (6 hours a week), so it is very flexible for working adults looking to gain new coding skills. You will learn the foundations of software development in a completely virtual classroom setting.

What You Will Learn: JavaScript Ignition is a 10-week, part-time course hosted during the evenings twice per week. Each week you will learn a new concept that guides you through the basics of JavaScript programming to an

Learn JavaScript programming, user interface (UI) design, or software development!

intermediate level. Along the way, you will be working through projects of increasing complexity as you advance into your final project - a fully functioning web application. You will learn to code with JavaScript, functions, logics, input/output, data structures, the World Wide Web, client-side coding, server-side coding, and advanced layouts with CSS.

Software Development Bootcamp:

Duration: 12 Weeks
Time Commitment:
Full-Time;
Mon - Fri 9 AM - 5 PM (EST)
Total Hours: 480
Cost: \$10,000

Duration: 24 Weeks
Time Commitment:
Part-Time; Tues & Thurs 6 PM - 9 PM, Sunday 1 PM - 7 PM
Total Hours: 480
Cost: \$10,000

Job Titles: Web Developer, Software Engineer, Jr. Software Engineer, Jr. Web Developer, Customer Support Specialist, Customer Success Specialist, Software Developer, Software Support Developer, Associate Developer

The Opportunity: There is no better time than now to jump into the world of software development! As the world

becomes increasingly reliant on technology, the demand for programming skills is at an all-time high. Our grads see an average increase in salary of \$15,000 in their first job after graduation, and salaries only continue to grow from there. This program teaches the most widely used programming language in the world - JavaScript. Companies big and small, including Google, LinkedIn, Facebook, and Netflix all use JavaScript to power parts of their web applications.

Program Benefits: In addition to learning in-demand skills, our graduates are job-ready upon graduation with the assistance of our Career Services team. While in class, our students learn about the tech industry, career pathways, the job market, and the job search process, and receive a customized job search strategy and unlimited 1:1 career coaching. Alongside technical instruction and Career Services, students develop their interpersonal skills through collaboration, where they work on a real-world project with a real company that further enhances their experience in speaking the industry language and building the skills necessary to effectively contribute to a team. Network weekly with guest speakers from the tech industry where we hear from different software developers, web designers, and development managers. See what code looks like in real technical environments, and discuss interviewing techniques, career pathways, and much more.

What You Will Learn: Over the course of 12 weeks, you will learn how to build, test, and deploy software applications using JavaScript on the client- and server-side of an application (front-end + back-end). Starting with fundamentals, you will quickly move into more complex programming concepts that are solidified through challenges, such as pair programming, weekly projects, lab exercises, and code reviews. The projects you create throughout the course will be used to build your portfolio which will serve as a showcase of your work and a valuable asset to your post-bootcamp job hunt. You will learn how to code with JavaScript, web design, responsive layout, client-side programming, server-side programming, React apps, and databases, plus several professional and soft skills from collaborating with teams and working with Career Services.



HOLYOKE
COMMUNITY
COLLEGE

Start **here**. Start **now**.

Start free.

No matter your age or income,
community college is now **free** in Massachusetts!

LEARN MORE AT:

hcc.edu/masseducate

Holyoke Community College is now free!

- The **MassEducate** and **MassReconnect** programs allow all Massachusetts residents who have not yet earned a bachelor's degree to attend Holyoke Community College for free.
- **No tuition. No fees.** And both programs include an allowance for books and supplies for certain students.
- **MassEducate** and **MassReconnect** are last dollar financial aid grant awards that are applied to a student's account after all other state and federal financial aid and grants are applied.

LEARN MORE AT:

hcc.edu/masseducate

Start *here*. Start *now*. Start *free*.

No matter your age or income, community college is now **free** in Massachusetts!

To be eligible for MassEducate or MassReconnect, you must:

- Complete the Free Application for Federal Student Aid (FAFSA)
- If you are not eligible to complete the FAFSA and are an approved “High School Completer” under the Massachusetts tuition equity law, you can complete the Massachusetts Application for State Financial Aid (MASFA) and still attend for free.
- Apply to Holyoke Community College and enroll in an approved program of study. Applications are open all year long and there’s never an application fee. Classes start September 3.
- Have physically resided in Massachusetts for at least one year, as of the start of your first enrolled term.
- Have earned a high school diploma or the equivalent (GED/HiSET).
- Are enrolled in at least six credits (usually two classes) per semester in an approved program of study leading to an associate degree or certificate.
- Maintain satisfactory academic progress in accordance with Holyoke Community College policies.

LEARN MORE AT:

hcc.edu/masseducate

HOLYOKE
COMMUNITY
COLLEGE

ENROLLMENT FORM

QUESTIONS?

hcc.edu/bce
413.552.2500

NOTE:

Many courses fill fast. We suggest you register at least two weeks before class start date, or by registration deadline if noted.

If space is still available in a class, HCC can accept registration for most classes up to the business day before class starts.

How'd you hear about us?

Please check all that apply.

- On HCC's website
- Mailing about courses or programs
- Email
- Ad or story in newspaper/radio
- Received Community Education course bulletin...
 - in mail
 - on campus
- Social media
- Other (please indicate): _____

About you:

Last name:	First name:

Date of birth:	Phone:	Email:

Street address:

City:	State:	Zip code:

I have read and understand the refund policy, available at hcc.edu/bce:

Signature: _____

5 EASY WAYS TO REGISTER

- 1 **ONLINE**
hcc.edu/bce
- 2 **WALK-IN 8:30am-3:30pm**
Kittredge Center
2nd Floor, Lobby
- 3 **CALL**
413.552.2500
8:30 a.m.–3:30p.m.
- 4 **FAX**
413.552.2745
- 5 **MAIL**
Business & Community
Education – Kittredge Center
303 Homestead Avenue -K211
Holyoke, MA 01040



Class selections:

Course number:	CRN:	Course title:	Tuition:
Total:			

Payment:

We accept personal checks, money orders, MasterCard, Visa, and Discover. Complete all items below if you are charging a course or registering by fax. Please do not send cash.

- Visa
- MasterCard
- Discover
- Check
- Money Order

Card number:	
Expiration date:	
Signature:	

Youth Programming, Non-credit Professional Development, and Personal Enrichment Courses

Fall 2024



Holyoke Community College
303 Homestead Avenue
Holyoke, MA 01040

NONPROFIT
ORGANIZATION
US POSTAGE PAID
SPRINGFIELD MA
PERMIT NO 228

HOLYOKE
COMMUNITY
COLLEGE

Register Now at hcc.edu/bce

Questions? 413.552.2500



Please Recycle
HCC uses multiple mailing lists. If you receive a duplicate, please share it with a friend.